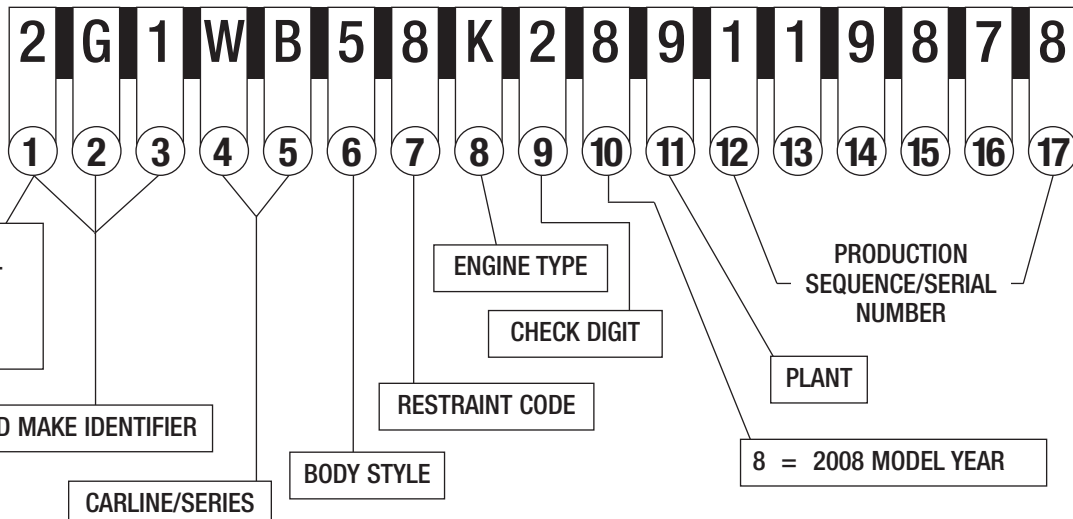




2008 PASSENGER CAR VIN SYSTEM

TYPICAL VIN

POSITION NO.



1-3 WORLD MAKE IDENTIFIER

1- CHEVROLET 1G1, 2G1, 3G1, KL1	2- PONTIAC 1G2, 2G2, 3G2, 5Y2, KL2	4- BUICK 1G4, 2G4	6- CADILLAC 1G6	8- SATURN 1G8, W08
---	--	-----------------------------	---------------------------	------------------------------

4-5 CARLINE/SERIES

CHEVROLET A/J - COBALT BASE w/AUTO TRANS A/K - COBALT 1LS - w/AUTO TRANS A/L - COBALT 1LT - w/AUTO TRANS A/M - COBALT 2LT - w/AUTO TRANS A/P - COBALT 1SP - w/AUTO TRANS A/N - COBALT BASE - w/MAN TRANS A/R - COBALT 1LS - w/MAN TRANS A/T - COBALT 1LT - w/MAN TRANS A/W - COBALT 2LT - w/MAN TRANS A/U - COBALT 1SP - w/MAN TRANS A/S - COBALT SS COUPE J/D - OPTRA J/K - OPTRA LT T/D - AVEO BASE/LS T/G - AVEO LT W/B - IMPALA LS SEDAN W/C - IMPALA 2LT, 3.9L W/D - IMPALA SS SEDAN W/S - IMPALA POLICE SEDAN W/T - IMPALA 1LT 3.5L W/U - IMPALA LTZ (RPO STZ) W/V - IMPALA 50 TH ANIV. Y/Y - CORVETTE Z/S - MALIBU LS CLASSIC Z/T - MALIBU LT CLASSIC Z/F - MALIBU BAS HYBRID Z/G - MALIBU LS Z/H - MALIBU LT Z/K - MALIBU LTZ Z/J - MALIBU LT	BUICK H/D - LUCERNE CXL H/P - LUCERNE CX H/E - LUCERNE CXS H/R - LUCERNE CXL W/C - LACROSSE CX W/D - LACROSSE CXL W/E - LACROSSE CXS W/N - LACROSSE SUPER SERIES W/F - ALLURE CX (CANADA ONLY) W/H - ALLURE CXS (CANADA ONLY) W/J - ALLURE CXL (CANADA ONLY) W/P - ALLURE SUPER SERIES (CANADA ONLY)	CADILLAC D/M - CTS MAN TRANS RWD D/F - CTS AUTO TRANS RWD D/G - CTS AUTO TRANS AWD D/H - CTS AUTO TRANS AWD NAVIGATION D/J - CTS AUTO TRANS NAVIGATION D/P - CTS MAN TRANS RWD HIGH FEATURE V6 D/R - CTS AUTO TRANS RWD HIGH FEATURE V6 D/S - CTS AUTO TRANS AWD HIGH FEATURE V6 D/T - CTS AUTO TRANS AWD NAVIGATION, HIGH FEATURE V6 D/V - CTS AUTO TRANS RWD NAVIGATION D/C - STS V-8 D/E - STS L D/W - STS RWD D/X - STS-V D/Y - STS RIGHT HAND DRIVE D/A - STS V6 AWD D/B - STS V8 AWD D/K - STS RWD NAVIGATION SCREEN D/D - STS V6 AWD NAVIGATION SCREEN D/L - STS V8 AWD NAVIGATION SCREEN K/D - DTS Y/V - XLR ROADSTER Y/X - XLR-V
PONTIAC A/L - G5 BASE w/AUTO TRANS A/N - G5 GT w/MAN TRANS A/R - G5 LS w/MAN TRANS A/S - G5 GT w/AUTO TRANS M/B - SOLSTICE CONVERTIBLE w/MAN TRANS M/G - SOLSTICE GXP TURBO CONV. w/MAN TRANS M/C - SOLSTICE CONV. w/AUTO TRANS M/F - SOLSTICE GXP TURBO CONV. w/AUTO TRANS S/L - VIBE, FWD w/AUTO TRANS T/D - WAVE LS T/W - WAVE LT W/C - GRAND PRIX GXP SEDAN W/P - GRAND PRIX SEDAN Z/F - G6 1SV VALUE LEADER SEDAN Z/G - G6 SE1 4-CYL SEDAN Z/H - G6 GT COUPE/SEDAN/ CONV. Z/M - G6 GXP COUPE/SEDAN E/C - G8 BASE 3/6L ENGINE E/R - G8 GT 6.0L ENGINE T/D - G3 S (MEXICO ONLY) T/J - G3 SE (MEXICO ONLY) T/M - G3 SX (MEXICO ONLY)	SATURN A/T - ASTRA XR A/R - ASTRA XE M/B - SKY CONVERTIBLE W/MAN TRANS M/G - SKY TURBO CONVERTIBLE W/AUTO TRANS M/C - SKY CONVERTIBLE W/AUTO TRANS M/F - SKY TURBO CONVERTIBLE W/MAN TRANS Z/R - AURA HYBRID Z/S - AURA XE Z/V - AURA XR	

6 BODY STYLE (GM STYLE)

1 TWO-DOOR COUPE (27, 37, 47, 57)
2 TWO-DOOR (07, 08, 77, 87)
3 TWO-DOOR CONVERTIBLE (67)
5 FOUR-DOOR SEDAN (19, 69)
6 FOUR-DOOR SEDAN (26, 29, 48, 68)
7 FOUR-DOOR MPV (06, 46)
8 FOUR-DOOR STATION WAGON (35)
9 FOUR-DOOR STATION WAGON (75)

7 RESTRAINT CODES

1 DRIVER & PASSENGER INFLATABLE RESTRAINT - FRONT
2 ACTIVE (MANUAL) BELTS W/DRIVER & PASSENGER INFLATABLE RESTRAINT - FRONT & SIDE
3 ACTIVE (MANUAL) BELTS W/DRIVER & PASSENGER INFLATABLE RESTRAINT - FRONT, SIDE & ROOF
4 ACTIVE (MANUAL) BELTS W/DRIVER & PASSENGER INFLATABLE RESTRAINT - FRONT & ROOF
5 ACTIVE (MANUAL) BELTS W/DRIVER & PASSENGER INFLATABLE RESTRAINT - FRONT W/OCCUPANT SENSOR
6 ACTIVE (MANUAL) BELTS W/DRIVER & PASSENGER INFLATABLE RESTRAINT - FRONT AND SIDE & OCCUPANT SENSOR
7 ACTIVE (MANUAL) BELTS W/DRIVER & PASSENGER INFLATABLE RESTRAINT - FRONT, SIDE AND ROOF & OCCUPANT SENSOR
8 ACTIVE (MANUAL) BELTS W/DRIVER & PASSENGER INFLATABLE RESTRAINT - FRONT AND ROOF & OCCUPANT SENSOR

8 ENGINE TYPE

CODE	ENG. OPT.	DISP.	CYL.	FUEL* SYSTEM	DIV. USAGE
A	LH2	4.6L	V8	SFI	6
B	LE5	2.4L	L4	MFI	1,2,8
C	LS4	5.3L	V8	SFI	1,2,4
D	LC3	4.4L	V8	MFI	1,6
E	LS7	7.0L	V8	SFI	1
F	L61	2.2L	L4	MFI	1,2,8
J	LG8	3.1L	V6	SFI	4
K	LZE	3.5L	V6	SFI	1
L	LBK	2.5L	L6	-	2
M	L95	1.4L	L4	MFI	1
N	LZ4	3.5L	V6	SFI	1,2,8
T	LP1	2.8L	V6	SFI	2,6
V	LLT	3.6L	V6	SIDI	1,6
W	LS3	6.2L	V8	SFI	1
X	LNF	2.0L	L4	DI	1,2,8
Y	LD8	4.6L	V8	SFI	2,4,6
Y	L76	6.0L	V8	SFI	2
Z	L34	2.0L	L4	MFI	1,2
1	LZ9	3.9L	V6	SFI	1
1	2H0	1.8L	L4	MFI	8
2	L26	3.8L	V6	SFI	2,4
3	LZG	3.9L	V6	MFI	1
5	LAT	2.4L	L4	MFI	8
6	LXT	1.6L	L4	-	1
7	LY7	3.6L	V6	SFI	1,2,4,6,8
8	LV6	1.8L	L4	MFI	2
9	L37	4.6L	V8	SFI	6

*LEGEND
MFI = MULTIPOINT FUEL INJECTION
SFI = SEQUENTIAL FUEL INJECTION

11 PLANT

B - LANSING MI	S - RAMOS ARIZPE MEXICO	0 - LANSING MI	7 - LORDSTOWN OH
B - BUPYUNG S. KOREA	U - HAMTRAMCK MI	1 - OSHAWA #2 ON	8 - TILLSONBURG ON (IPC)
C - CHANGWON S. KOREA	Y - WILMINGTON DE	4 - ORION MI	9 - OSHAWA #1 ON
F - FAIRFAX II KS	Z - FREMONT CA	5 - BOWLING GREEN KY	L - ELIZABETH AUSTRALIA
K - KUNSAN S. KOREA	Z - SPRING HILL TN	5 - ANTWERP BELGIUM	

GM

2008 LIGHT DUTY TRUCK, MULTIPURPOSE PASSENGER VEHICLE (MPV) AND INCOMPLETE VEHICLE VIN SYSTEM

TYPICAL VIN

POSITION NO.

1, 4, 5 = U.S. BUILT
2 = CANADIAN BUILT
3 = MEXICO BUILT

WORLD MAKE IDENTIFIER

GVWR/BRAKE SYSTEM

BODY TYPE

CHECK DIGIT

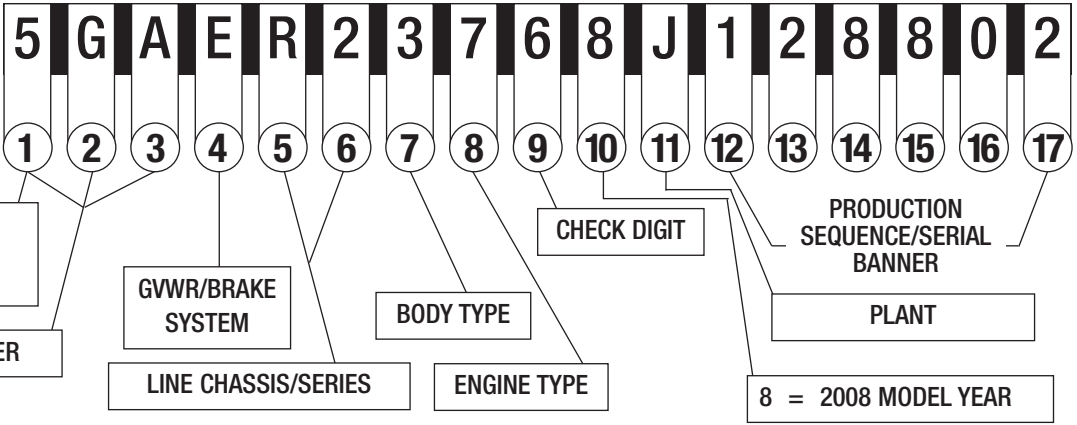
PRODUCTION SEQUENCE/SERIAL BANNER

PLANT

LINE CHASSIS/SERIES

ENGINE TYPE

8 = 2008 MODEL YEAR



1-3 WORLD MAKE IDENTIFIER

CHEVROLET

1GB* 2GB* 3GB*
1GC 2GC 3GC
1GA** 1GN 3GN
2CN

GMC

1GD* 2GD* 3GD*
1GT 2GT 3GT
1GJ** 1GK 3GK

BUICK

3G5 4GL* 5GA

SAAB

5S3

SATURN

4NT* 5GZ

CADILLAC

1GE* 1GY 3GY

PONTIAC

1G5* 1GM 2CK 3G7

ISUZU

1GG* 4NU

HUMMER

5GN 5GR 5GT

* Incomplete Vehicle

** Van w/seating exceeding
10 Passengers

4 GVWR/BRAKE SYSTEM

CODE	GVWR RANGE (IN POUNDS)	BRAKE SYSTEM
A	0 - 3000	HYD
B	3001 - 4000	HYD
C	4001 - 5000	HYD
D*	5001 - 6000	HYD
E**	6001 - 7000	HYD
F**	7001 - 8000	HYD
G	8001 - 9000	HYD
H	9001 - 10000	HYD
J	10001 - 14000	HYD
K	14001 - 16000	HYD
L	16001 - 19500	HYD
M	19501 - 26000	AIR/HYD

* BUICK & CHEVROLET

COMMERCIAL BODY/CHASSIS

**CADILLAC COMMERCIAL BODY/CHASSIS

5-6 LINE CHASSIS/SERIES

CHEVROLET/GMC

A/1 HHR LS (1/2 TON) w/AUTO TRANS
A/2 HHR LT (1/2 TON) w/AUTO TRANS
A/3 HHR LS w/MAN TRANS
A/4 HHR 1LT w/MAN TRANS
A/5 HHR 2LT
A/6 HHR SS w/AUTO TRANS
A/7 HHR SS w/MAN TRANS
A/8 HHR LS PANEL VAN w/AUTO TRANS
A/9 HHR LS PANEL VAN w/MAN TRANS
A/0 HHR LT PANEL VAN
B/9 INCOMPLETE (CHEVROLET)
C/1 4x2 (1/2 TON) SILVERADO/SIERRA WORK TRUCK, TAHOE/SUBURBAN/AVALANCHE LS, YUKON/YUKON XL SL
C/2 4x2 (1/2 TON) SILVERADO/TAHOE/SUBURBAN/AVALANCHE LT, SIERRA/YUKON/YUKON XL SLE
C/3 4x2 (1/2 TON) SILVERADO/TAHOE/SUBURBAN/AVALANCHE LTZ, SIERRA/YUKON XL SLT
C/4 4x2 (3/4 TON) SILVERADO/SIERRA WORK TRUCK, SUBURBAN LS, YUKON XL SL
C/5 4x2 (3/4 TON) SILVERADO/SUBURBAN LT, SIERRA/YUKON XL SLE
C/6 4x2 (3/4 TON) SILVERADO LTZ, SIERRA/YUKON XL SLT
C/7 4x2 (1 TON) SILVERADO/SIERRA WORK TRUCK
C/8 4x2 (1 TON) SILVERADO LT, SIERRA SLE
C/9 4x2 (1 TON) SILVERADO LTZ, SIERRA SLT
C/0 4x2 (1/2 TON) TAHOE POLICE/SPECIAL SERVICE, SIERRA/YUKON/YUKON XL DENALI
K/1 4x4 (1/2 TON) SILVERADO/SIERRA WORK TRUCK, TAHOE, SUBURBAN/AVALANCHE LS, YUKON/YUKON XL SL
K/2 4x4 (1/2 TON) SILVERADO/SUBURBAN/AVALANCHE LT, SIERRA/YUKON/YUKON XL SLE
K/3 4x4 (1/2 TON) SILVERADO/SUBURBAN/AVALANCHE LTZ, SIERRA/YUKON/YUKON XL SLT
K/4 4x4 (3/4 TON) SILVERADO/SIERRA WORK TRUCK, SUBURBAN LS, YUKON XL SL
K/5 4x4 (3/4 TON) SILVERADO/SUBURBAN LT, SIERRA/YUKON XL SLE
K/6 4x4 (3/4 TON) SILVERADO/SUBURBAN LTZ, SIERRA/YUKON XL SLT
K/7 4x4 (1 TON) SILVERADO/SIERRA WORK TRUCK
K/8 4x4 (1 TON) SILVERADO LT, SIERRA SLE
K/9 4x4 (1 TON) SILVERADO LTZ, SIERRA SLT
K/0 4x4 (1/2 TON) TAHOE POLICE/SPECIAL SERVICE, SIERRA/YUKON/YUKON XL DENALI
G/1 4x2 EXPRESS/SAVANA 4x2 1500 (1/2 TON)
G/2 4x2 EXPRESS/SAVANA 4x2 2500 (3/4 TON)
G/3 EXPRESS/SAVANA 4x2 3500 (1 TON)
G/4 EXPRESS LT 4x2 (1/2 TON)
G/5 EXPRESS LT 4x2 (3/4 TON)
G/6 EXPRESS LT 4x2 (1 TON)
H/1 EXPRESS/SAVANA AWD 1500 (1/2 TON)
H/2 EXPRESS LT AWD (1/2 TON)
L/1 EQUINOX LS FWD
L/2 EQUINOX 1LS AWD
L/3 EQUINOX 1LT FWD
L/4 EQUINOX 1LT AWD
L/5 EQUINOX 2LT FWD
L/6 EQUINOX 2LT AWD
L/7 EQUINOX LTZ FWD
L/8 EQUINOX LTZ AWD
L/9 EQUINOX SPORT FWD
L/0 EQUINOX SPORT AWD
S/1 4x2 (1/2 TON) CANYON/COLORADO WORK TRUCK, TRAILBLAZER LS FLEET SERVICE, ENVOY FLEET VEHICLE
S/2 4x2 (1/2 TON) CANYON SL, COLORADO LS, TRAILBLAZER LT, ENVOY SLE
S/3 4x2 (1/2 TON) CANYON SLE, COLORADO LT1, TRAILBLAZER SS, ENVOY SLT
S/4 4x2 (1/2 TON) CANYON SLT, COLORADO LTZ, ENVOY DENALI
S/5 4x2 (1/2 TON) COLORADO LT3
T/1 4x4 (1/2 TON) CANYON/COLORADO WORK TRUCK, TRAILBLAZER LS FLEET SERVICE, ENVOY FLEET VEHICLE
T/2 4x4 (1/2 TON) CANYON SL, COLORADO LS, TRAILBLAZER LT, ENVOY SLE
T/3 4x4 (1/2 TON) CANYON SLE, COLORADO LT1, TRAILBLAZER SS, ENVOY SLT
T/4 4x4 (1/2 TON) CANYON SLT, COLORADO LT2, ENVOY DENALI
R/1 ACADIA SLE FWD (1/2 TON)
R/2 ACADIA SLT (1) FWD (1/2 TON)
R/3 ACADIA SLT (2) FWD (1/2 TON)
U/0 UPLANDER APV 4x2 RWB (1/2 TON) BASE
U/2 UPLANDER LS APV 4x2 RWB (1/2 TON)

U/3 UPLANDER LT APV 4x2 RWB (1/2 TON)
V/0 UPLANDER EWB APV 4x2 (1/2 TON) BASE
V/1 ACADIA SLE AWD, UPLANDER EWB, CARGO/MOBILITY APV (1/2 TON)
V/2 ACADIA SLT (1) AWD, UPLANDER EWB, LS APV (1/2 TON)
V/3 ACADIA SLT (2) AWD, UPLANDER EWB, LT APV (1/2 TON)

BUICK

R/1 ENCLAVE CX FWD (1/2 TON)
R/2 ENCLAVE CXL FWD (1/2 TON)
R/3 ENCLAVE SPECIAL EDITION FWD (1/2 TON)
V/1 ENCLAVE CX AWD (1/2 TON)
V/2 ENCLAVE CXL AWD (1/2 TON)
V/3 ENCLAVE SPECIAL EDITION AWD (1/2 TON)

CADILLAC

K/0 INCOMPLETE HEARSE (DTS)
K/9 INCOMPLETE LIMOUSINE (DTS)
E/2 SRX RWD V8
E/3 SRX RWD V6 RIGHT HAND DRIVE
E/4 SRX AWD V6
E/5 SRX AWD V8
E/6 SRX RWD V6
C/6 ESCALADE 4x2 1500 (1/2 TON) LUXURY
K/4 ESCALADE/ESCALADE ESV/ESCALADE EXT PLATINUM
K/7 ESCALADE ARMOR PACKAGE (3/4 TON)

PONTIAC

L/3 TORRENT FWD (1/2 TON)
L/4 TORRENT AWD (1/2 TON)
L/5 TORRENT GXP FWD (1/2 TON)
L/7 TORRENT GXP AWD (1/2 TON)
U/0 MONTANA SV6 RWB 4x2 (1/2 TON) BASE U.S. (CANADA SAU1, MEXICO 1SB)
U/2 MONTANA SV6 RWB 4x2 (1/2 TON)-U.S. (CANADA SAU2, MEXICO 1SC)
U/3 MONTANA SV6 RWB 4x2 (1/2 TON)-U.S. (CANADA SAU3, MEXICO 1SE)
V/0 MONTANA SV6 EWB, 4x2 (1/2 TON) BASE (CANADA 1SA, MEXICO 1SB)
V/1 MONTANA SV6 EWB, MOBILITY INCOMPLETE (1/2 TON)
V/2 MONTANA SV6 EWB (1/2 TON)-U.S. (CANADA 1SB, MEXICO 1SC)
V/3 MONTANA SV6 EWB (1/2 TON)-U.S. (CANADA 1SC, MEXICO 1SE)

SATURN

L/1 VUE RED LINE FWD
L/3 VUE XE FWD
K.4 VUE XE AWD
L/5 VUE XR FWD
L/7 VUE XR AWD
L/9 VUE RED LINE AWD
L/0 VUE GREEN LINE (BAS HYBRID) FWD
R/1 OUTLOOK XE FWD (1/2 TON)
R/2 OUTLOOK XR FWD (1/2 TON)
R/3 OUTLOOK XR-TOURING FWD (1/2 TON)
V/1 OUTLOOK XE AWD (1/2 TON)
V/2 OUTLOOK XR AWD (1/2 TON)
V/3 OUTLOOK XR-TOURING AWD (1/2 TON)

HUMMER

N/2 H2 4x4 (3/4 TON) BASE MODEL
N/7 H2 4x4 (3/4 TON) ADVENTURE MODEL
N/8 H2 4x4 (3/4 TON) LUXURY MODEL
N/9 H2 4x4 (3/4 TON) SUT BASE/ADVENTURE MODELS
N/0 H2 4x4 (3/4 TON) SUT LUXURY MODEL
N/1 H3 4x4 (1/2 TON) BASE
N/3 H3 4x4 (1/2 TON) ADVENTURE MODEL
N/4 H3 4x4 (1/2 TON) LUXURY MODEL
N/5 H3-X 4x4 (1/2 TON)
N/6 H3 4x4 (1/2 TON) ALPHA EDITION

ISUZU

S/1 ASCENDER 4x2 (1/2 TON)
T/1 ASCENDER 4x4 (1/2 TON)

SAAB

T/1 SAAB 9-7X SUV
T/2 SAAB 9-7X AERO



2008 LIGHT DUTY TRUCK, MULTIPURPOSE PASSENGER VEHICLE (MPV) AND INCOMPLETE VEHICLE VIN SYSTEM

7 BODY TYPE

- 0 – COMMERCIAL CHASSIS/VEHICLE**
(CHEVROLET/BUICK/CADILLAC)
- 1 – COMMERCIAL SPECIAL AND RV CUTAWAY**
(INCLUDES CHEVROLET EXPRESS COMMERCIAL, & RV CUTAWAY
GMC SAVANA CARGO SPECIAL AND CAMPER SPECIAL)
- 2 – SPORT UTILITY TRUCK**
(AVALANCHE, ESCALADE EXT, ESCALADE EXT PLATINUM, H2 SUT)
- 3 – FOUR-DOOR CAB/UTILITY**
(INCLUDES TRAILBLAZER, ENVOY, EQUINOX, TORRENT, YUKON, TAHOE,
DENALI, ESCALADE, ESCALADE PLATINUM, H2 AND CREW CAB, H3,
ACADIA, ENCLAVE, OUTLOOK, SAAB 9-7)
- 3 – FOUR-DOOR ALL PURPOSE VEHICLE**
(MONTANA SV6, UPLANDER, VUE, SRX, HHR)
- 4. – TWO-DOOR CAB**
(COLORADO, CANYON, SIERRA, SILVERADO)
- 5 – VAN**
(EXPRESS, SAVANA, HHR PANEL TRUCK)
- 6 – SUBURBAN, YUKON XL, DENALI XL, ASCENDER, ESCALADE ESV,
ESCALADE ESV PLATINUM**
- 7 – MOTOR HOME CHASSIS**
- 8 – TWO-DOOR UTILITY (NO CURRENT USAGE)**
- 9 – EXTENDED CAB/EXTENDED VAN**
(COLORADO, CANYON, SIERRA, SILVERADO, EXPRESS AND
SAVANA)

8 ENGINE TYPE

CODE	ENG. OPT.	DISP.	CYL.	FUEL SYSTEM**
A	LH2	4.6L	V8	SFI
B	L33	5.3L	V8	SFI
C	LY2	4.8L	V8	SFI
D	L61	2.2L	L4	MFI
E	LLR	3.7L	L5	-
F	LNJ	3.4L	V6	SFI
G	L18	8.1L	V8	MFI
H	LS2	6.0L	V8	SFI
J	LY5	5.3L	V8	SFI
K	LY6	6.0L	V8	SFI
L	LH8	5.3L	V8	SFI
M	LH6	5.3L	V8	SFI
N	LZ4	3.5L	V6	SFI
P	LE5	2.4L	L4	MFI
R	L31	5.7L	V8	CPI
S	LL8	4.2L	L6	MFI
U	LQ4	6.0L	V8	MFI
W	LGD	3.9L	V6	SFI
X	LNF	2.0L	L4	DSL
X	LU3	4.3L	V6	MFI
Y	L76	6.0L	V8	SFI
Y*	LD8	4.6L	V8	MFI
Z	LAT	2.4L	L4	MFI
1	LZ9	3.9L	V6	SFI
3	LC9	5.3L	V8	SFI
4	LMF	5.3L	V8	SFI
5	LFA	6.0L	V8	SFI
6	LMM	6.6L	V8	DPI
7	LY7	3.6L	V6	SFI
8	L92	6.2L	V8	SFI
9	LLV	2.9L	L4	-
9*	L37	4.6L	V8	MFI
0	LMG	5.3L	V8	SFI

* USED ONLY IN BUICK, CHEVROLET & CADILLAC PASSENGER CAR – DERIVED INCOMPLETE VEHICLES

** DSL = DIESEL, MFI = MULTIPOINT FUEL INJECTION.
CPI = CENTRAL PORT INJECTION, T = TURBO
SFI = SEQUENTIAL FUEL INJECTION

11 PLANT

A - STRUANDALE	S. AFRICA	R - ARLINGTON	TX	3 - KAWASAKI	JAPAN
D - DORAVILLE	GA	S - RAMOS ARIZPE	MEXICO	6 - INGERSOLL	ON
E - PONTIAC	MI	S - SPRINGHILL	TN	6 - OKLAHOMA CITY	OK
F - FLINT	MI	T - SHREVEPORT	LA	7 - FUJISAWA	JAPAN
G - SILAO	MEXICO	Z - FORT WAYNE	IN	8 - SHREVEPORT	LA
H - MISHAWAKA	IN	0 - LANSING	MI	8 - TILLSONBURG	ON
J - JANESVILLE	WI	1 - OSHAWA	ON	(IPC)	
J - LANSING	MI	1 - WENTZVILLE	MO		
M - TOLUCA	MEXICO	2 - MORAINÉ	OH		



2008 MEDIUM DUTY TRUCK AND INCOMPLETE VEHICLE VIN SYSTEM

TYPICAL VIN

POSITION NO.

1, 4 = U.S. BUILT
2 = CANADIAN BUILT
J = JAPAN BUILT

WORLD MAKE IDENTIFIER

SERIES

GVWR/BRAKE SYSTEM

TRUCK LINE & CAB TYPE

CHASSIS TYPE

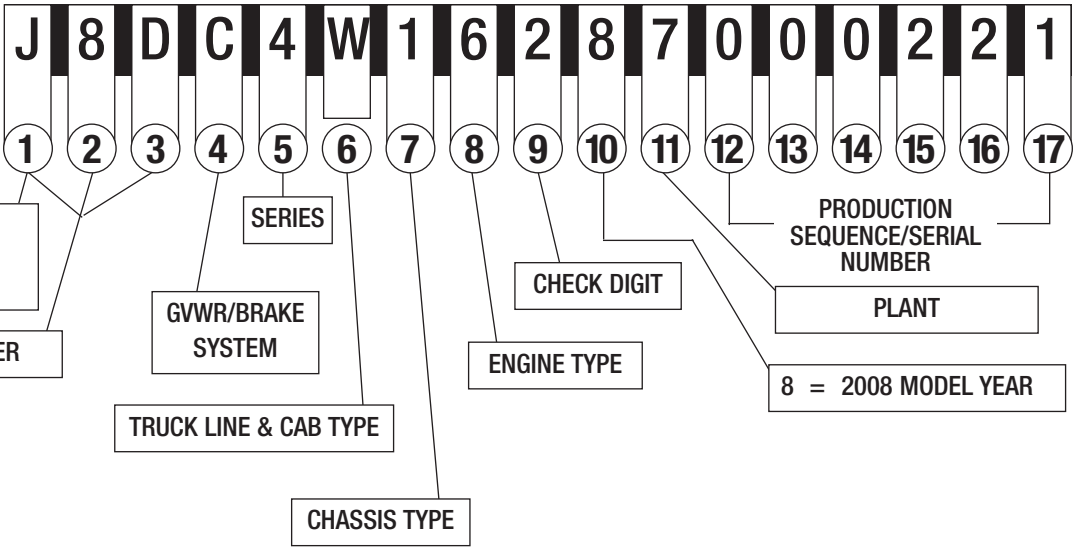
CHECK DIGIT

ENGINE TYPE

PRODUCTION SEQUENCE/SERIAL NUMBER

PLANT

8 = 2008 MODEL YEAR



1-3 WORLD MAKE IDENTIFIER

-CHEVROLET

1GC 2GC
1GB* 2GB*
4KB* J8B*

-GMC

1GT 2GT
1GD* 2GD*
4KD* J8D*

-ISUZU

4GT* 4KL JAL

* Incomplete Vehicle

5 SERIES

4 – 4500 SERIES (C4/W4)

5 – 5500 SERIES (C5/W5)

6 – 6500 SERIES (C6(H6*)/T6F)

7 – 7500 SERIES (B7/C7(H7*)/D7/T7F/W7)

8 – 8500 SERIES (C8(H8*)/T8F)

* H6, H7, H8 ARE IDENTIFIERS FOR C6, C7, C8 MODELS W/ISUZU NAMEPLATE CONVERSION OPTION Z89.

6 TRUCK LINE & CAB TYPE (MODEL)

A – FORWARD/TILTMMASTER MEDIUM, TILT, 72.0 BBC (W5)

W – FORWARD/TILTMMASTER MEDIUM, TILT, 71.0 BBC (W4)

E – C SERIES, CREW CAB (C4E – C8E)

C – C SERIES, CONVENTIONAL CAB (C4C – C8C)

V – C SERIES, CUTAWAY COMMERCIAL CAB (C4V – C8V)

U – C SERIES, CUTAWAY MOTORHOME (C4U/C5U)

J – W SERIES NPR/NPQ NON-TILT CAB, 110.0 BBC (W4/W5)

F – T SERIES TILT CAB, 86.0 BBC (T6F – T8F)

BBC = BUMPER TO BACK OF CAB

4 GVWR/BRAKE SYSTEM

CODE	GVWR RANGE (IN POUNDS)	BRAKE SYST.
A	9001 - 10,000	HYD
B	10,001 - 14,000	HYD
C	14,001 - 16,000	HYD
D	14,001 - 16,000	AIR
E	16,001 - 19,500	HYD
F	16,001 - 19,500	AIR
G	19,501 - 23,500	HYD
H	19,501 - 23,500	AIR
J	23,501 - 26,000	HYD
K	23,501 - 26,000	AIR
L	26,001 - 33,000	HYD
M	26,001 - 33,000	AIR
N	33,001 - 40,500	HYD
P	33,001 - 40,500	AIR
R	40,501 - 48,500	HYD
S	40,501 - 48,500	AIR
T	48,501 - 58,000	AIR
V	58,001 - 69,500	AIR
X	GLIDER KIT	—

7 CHASSIS TYPE

0 – GLIDER KIT

1 – 4 X 2 (2 AXLES - 1 DRIVING)

3 – 4 X 4 (2 AXLES - 2 DRIVING)

4 – 6 X 4 (3 AXLES - 2 DRIVING)

8 ENGINE TYPE

A – GM/CAT 7.2L L6 DI CCV DPF (LF6)

B – ISUZU 7.8L L6 DI TURBO DPF (LF8)

C – CAT 7.2L L6 TURBO ELECTRONIC (LG5)

G – GM 8.1L V8 MFI GASOLINE (L18)

N – GM 6.0L V8 SFI GASOLINE (LY6)

X – GLIDER KIT LESS ENGINE

4* – ISUZU 4.75L L4 4HE1-XS I/C TURBO DIESEL (1C3)

5* – ISUZU 4.75L L4 4HE1-XN I/C TURBO DIESEL (1C2)

6* – ISUZU 5.2L L4 I/C TURBO DIESEL (1L5)

9 – GM 6.6L V8 DIESEL DPI (LMM)

* CODES 4, 5 AND 6 ARE FOR ISUZU/GM ENGINES USED BY ISUZU/GM ORDERED VEHICLES BUILT BY ISUZU

The information shown is correct at time of printing, but may be changed during model year.

To obtain additional copies, please fax request to 586-492-0292

General Motors Corporation, Service Operations, 30501 Van Dyke, Warren, MI 48090

Litho in U.S.A. 9/07

©2007 General Motors Corporation. All Rights Reserved.

Part # 08VINCARD